

DIRECTIONAL COVER FOR 305 PRESSURE RELIEF DEVICES

Model 502/503/504 Series



FEATURES

- UV protected pure polyester paint protection.
- Rugged LM6 cast aluminum body to withstand the temperature and pressure of discharge.
- Supplied with a yellow top indicator and optional semaphore for high visibility of PRD operation.
- Designed to retrofit easily to VIAT 305 Pressure Relief Device.
- Schneider make switch with IP67 protection.
- Variable option for 2 Switches of 2NO 1NC each or 1NO 1NC each.
- Facility to rotate 360° for complete flexibility in directing the oil or gas spray.
- Pipe thread opening allows use of standard 4" pipe duct work to further direct oil spray.
- Option for having different threads also available.
- Option for using BS flange for ease of fitting of pipe.

VIAT

INSTRUMENTS

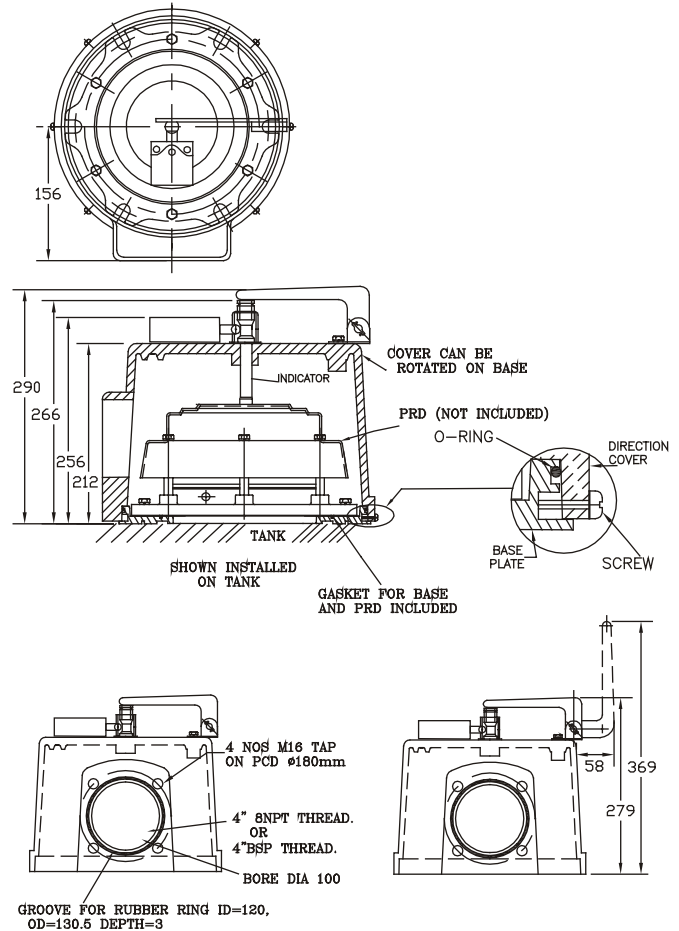
CA502-4R2



DESCRIPTION

The VIAT series 502-503-504 Direction Cover for Pressure Relief Devices is designed to direct the spray of oil and gas should the Pressure Relief Devices operate.

- It provides a full 360° rotation for complete flexibility in directing the spray. The compact geometry facilitates retrofit in even the tightest quarters and the included base plate provides a consistent sealing surface regardless of tank mounting flange size.
- To install the cover refer installation sheet included in every box of direction cover.
- The base is vented to allow for drainage of moisture. The cover opening includes a 4 inch tapered/straight pipe thread to accept standard pipe for duct work. The pipe should be supported separately.
- The use of cast aluminum assures durability and resistance to the temperature and pressure of the oil.
- A bright yellow semaphore is included as standard and provides highly visual indication of PRD operation.
- The series 502/503/504 cover is not designed to be used with the standard VIAT side-mounted alarm switch.
- Single / Double externally mounted switch on direction cover is available as an option, and provides easy test and reset capability from outside the cover. The standard external switch is IP67 with conduit entry for flexibility of connection at site.



SWITCH OPERATION	SPECIFICATION
<p>SWITCH TYPE-A</p> <p>BEFORE OPERATION</p> <p>AFTER OPERATION</p>	<p>AC 15; A 300 (Ue=240, Ie=3A)</p> <p>DC 13; Q 300 (Ue=250, Ie=0.27A)</p> <p>Conduit thread PG 13.5 with gland suitable for 9-12mm cable.</p>
<p>SWITCH TYPE-B</p> <p>BEFORE OPERATION</p> <p>AFTER OPERATION</p>	<p>10Amp — 250V AC</p> <p>0.8Amp — 125V DC</p> <p>0.4Amp — 250V DC</p> <p>Conduit thread 1/2" BSP with gland suitable for 9-12mm cable.</p>

HOW TO ORDER: (Please specify part number) :	
Model No.	Specification
502	Direction Cover 4"BSP M16x4 Hole without Switch.
503	Direction Cover 4"BSP M16x4 Hole with one Switch
504	Direction Cover 4"BSP M16x4 Hole with two Switch
505	Direction Cover 4"NPT without Switch.
506	Direction Cover 4"NPT with one Switch
507	Direction Cover 4"NPT with two Switch
508	Direction Cover 4"BSP M16x4 Hole with one Switch

Due to our policy of continuous product improvement, dimensions and designs are subject to change.

VIAT
INSTRUMENTS

VIAT INSTRUMENTS PVT. LTD.

2701 to 2704, Shilpangan Phase-II, Block LB-1
Sector-III, Salt Lake, Kolkata - 700 098, INDIA
Phones : (91-33) 9903805104, 23352925 ● Fax : (91-33) 23352926
E-mail : viatin@viatin.com ● Website : www.viatin.com

VIAT AMERICA, INC.

30 Shepard, Irvine, CA 92620
Tel: 949-679-0950 Fax: 949-417-1358
E-mail : sales@viatamerica.com
Website : www.viatamerica.com